

Blue Carbon

# SMART-BCT-V-48-200/250/300(P)

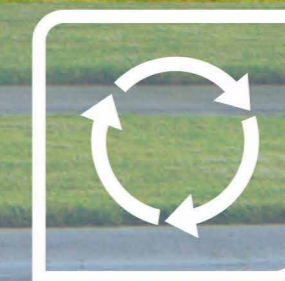
LiFePO<sub>4</sub> Battery Pack



Power monitoring



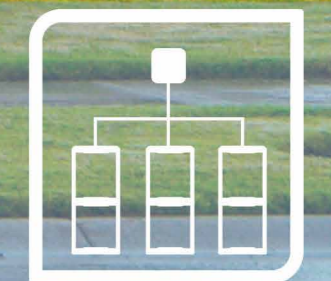
Durable endurance



Long cycle life



Sufficient storage capacity



Can be used in parallel

Blue Carbon

# SMART-BCT-V-48-200/250/300(P)

LiFePO4 Battery Pack



## SMART-BCT-V-48-200/250/300(P)

### Basic Specifications

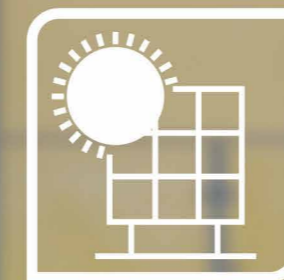
Cell Type	LiFePO4 Battery/LFP
Nominal Capacity	200Ah/250Ah/300Ah
Nominal Voltage	48V (51.2V)
Electricity (kWh)	10.24kWh/12.8kWh/15.36kWh
Continuously Use Input Current	100A

### Battery

Communication interface	RS485/CAN
Storage Temperature Range	-10-30°C
Operating Temperature Range	0°C-50°C
Storage Humidity	5-95% RH
Atmospheric Pressure	Below 5000 above sea level
Self-Discharge (25°C)	<3%/Month
Depth of Discharge	>80%
C-rate Discharge	<0.8C
Cycle Life	> 6000 times (< 0.5C)

### Other

Certification Standards	UN38.3/CE/MSDS/DGM
Warranty	5 years
Product Size	1218(±2)×507(±2)×212(±2)mm
Package Size	668(±2)×605(±2)×731(±2)mm
Parallel	Up to 15 pcs



Clean energy



Storing energy



Household appliances

# Blue Carbon



DC input

AC output

Air conditioning

lamp

PC

Induction

TV

## SMART-BCT-V-48-200/250/300(P) LiFePO4 Battery Pack

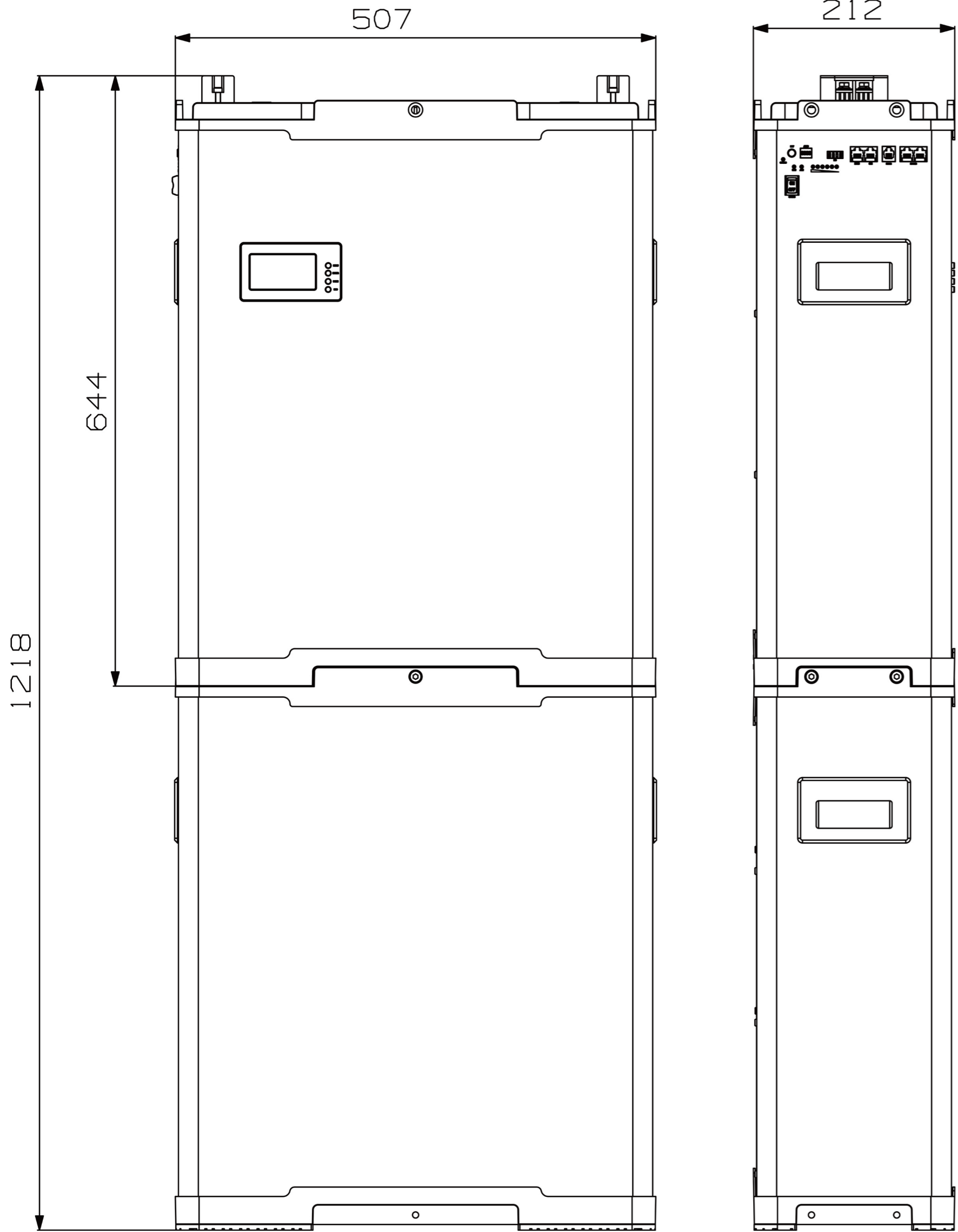
Storing the power from the solar panel, to be used as reserve power or emergency power supply. At night or at the time of power outage, it can supply the power to electrical appliances by using the stored energy, to avoid the inconvenience caused by power outage, so that you can calmly deal with the situation of power outages.



# Blue Carbon

# SMART-BCT-V-48-200/250/300(P)

## LiFePO4 Battery Pack



- RST
- DO
- OFF/NO
- RS485
- CAN
- RS232
- RS485B

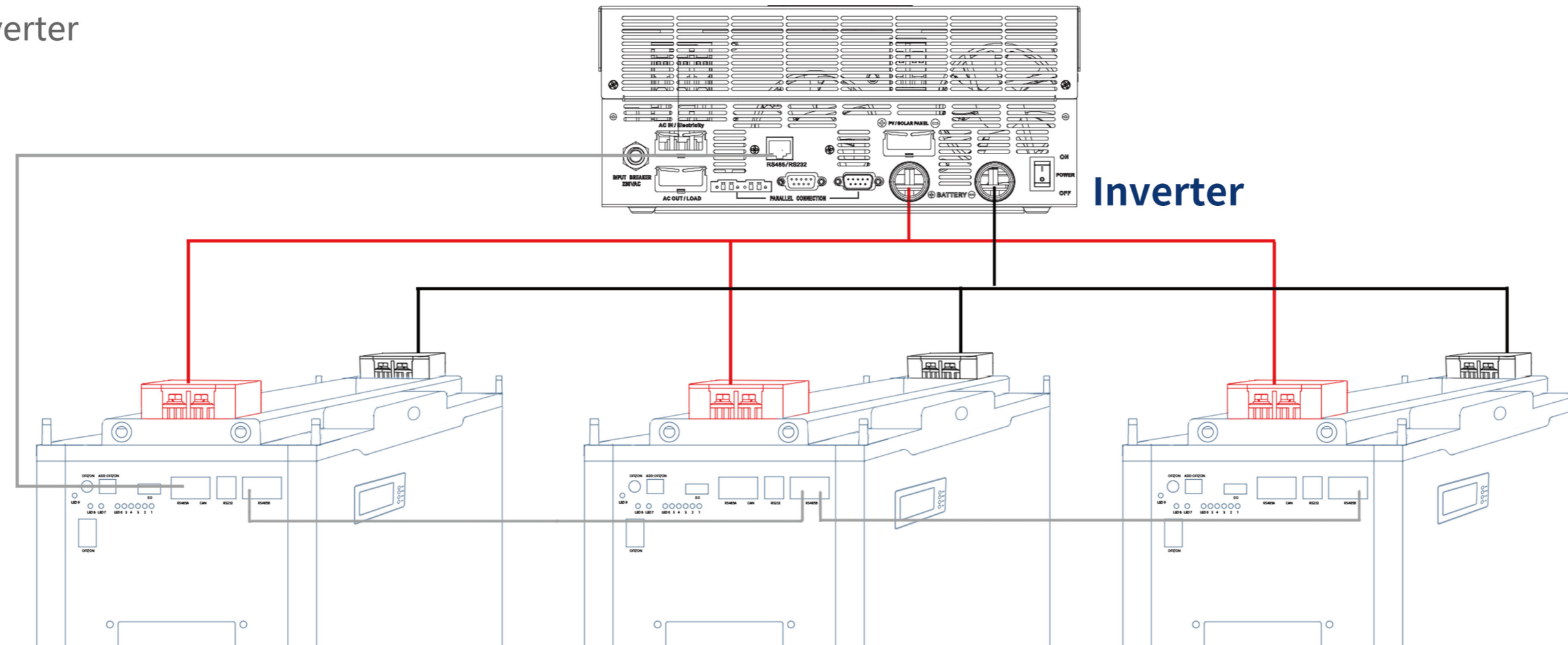


# SMART-BCT-V-48-200/250/300(P)

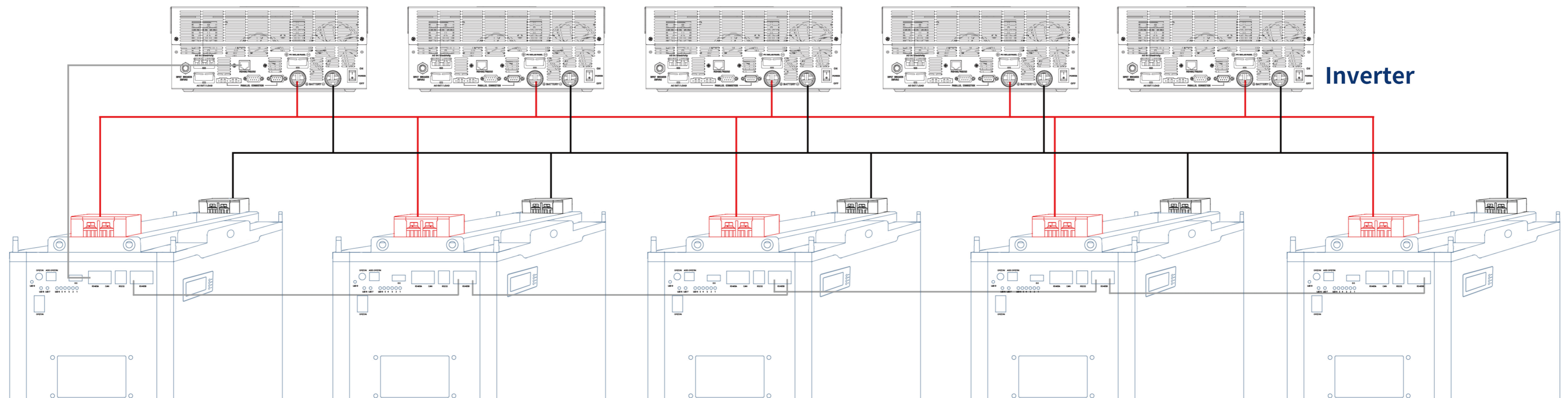
## LiFePO4 Battery Pack

Up to 15 groups can be connected in parallel

1. Multiple batteries connect to one inverter



2. Multiple batteries are connected to multiple inverters

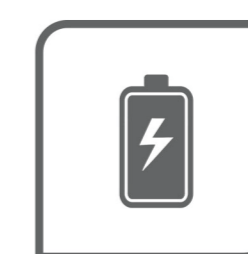




## SMART-BCT-V-48-200/250/300(P)

### LiFePO<sub>4</sub> Battery Pack

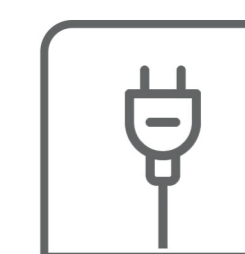
For no city power areas, the battery pack can be charged by solar panels and used for night lighting; For the areas that city power is expensive, the battery pack can be charged during the electricity valley value period, and used at the peak power period; For the areas which power off from time to time, the battery pack can be used as UPS, to avoid information loss caused by sudden power outage. The battery pack is applicable to commercial lighting, industrial lighting, home lighting, outdoor lighting, camping tourism, farming, planting, the night market stalls, etc.



Charging Overvoltage Protection



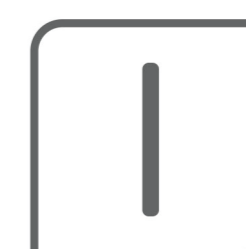
Discharge Undervoltage Protection



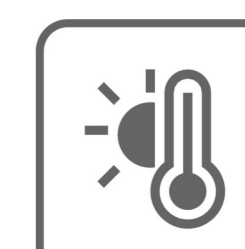
Charging Overcurrent Protection



Discharge Overcurrent Protection



Short Circuit Protection



Temperature Protec



+86 400-061-7071

[www.bluecarbontech.com](http://www.bluecarbontech.com)

31st Floor, Building A, International Fortune Center,  
Rizhao City, Shandong Province, China